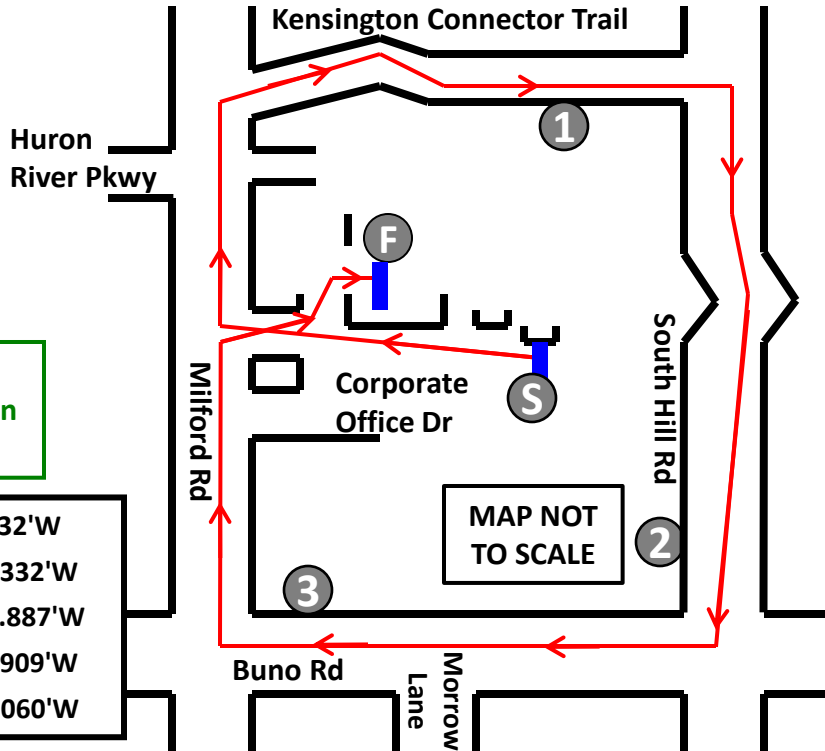
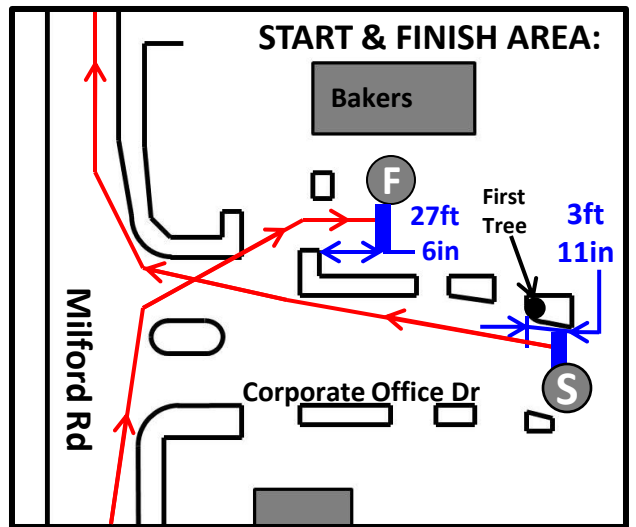
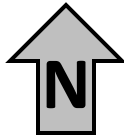


Labor Day 6K

Milford, Michigan

USATF Certification MI140036SH

Effective 8-29-14 to 12-31-24



Course Measurement
completed by: Joe Baldwin
joerun1971@aol.com

Start: 42° 33.536' N, 83° 36.332'W
1 Mile: 42° 33.705' N, 83° 36.332'W
2 Mile: 42° 33.196' N, 83° 35.887'W
3 Mile: 42° 33.047' N, 83° 36.909'W
Finish: 42° 33.545' N, 83° 37.060'W

- S** Start: Corporate Office Dr. at east end entrance to office park, 3ft 11in west of first tree on north side.
- 1** 1-Mile: Kensington Connector Trail, (42° 33.705' N, 83° 36.332'W)
- 2** 2-Mile: 8ft 1in south of mailbox at 2535 S. Hill Rd.
- 3** 3-Mile: 208ft 9in west of mailbox at 1045 Buno Rd.
- F** Finish: Bakers Parking lot, 27ft 6in east of curb at easternmost entrance.